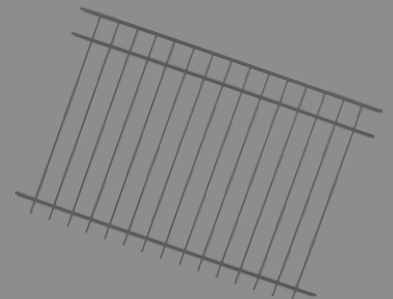
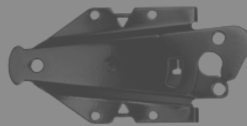
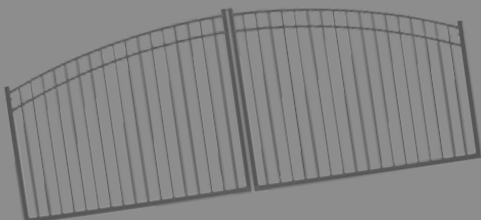


PRODUCT CATALOG

"Your Wholesale Fence Partner, Built on Family Trust."



904-220-2030

Trufencesupply.com

Trufencesupply@gmail.com

Contact Us



1642 Cortez Road
Jacksonville, FL 32246



Monday-Friday:
7:30am-4:00pm
Last pick up is at 3:30pm



904-220-2030



904-220-2030



Trufencesupply@gmail.com



Trufencesupply.com



Tru-Fence Supply



Follow and Like us
on Facebook

Welcome to Our World of Fence Excellence

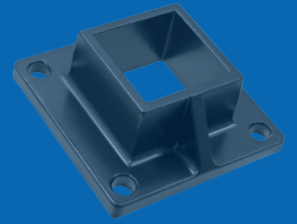
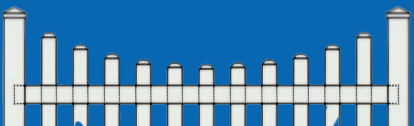
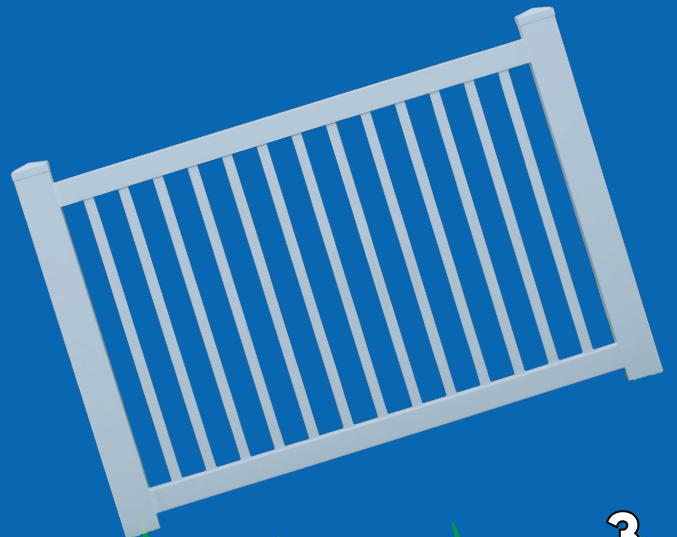
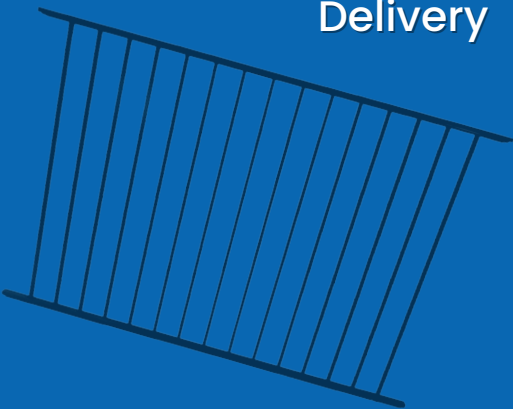
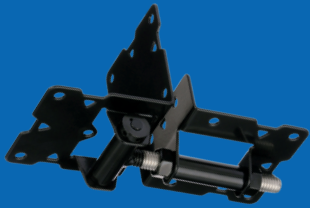


Table of Contents:

Contact Us	2
Table of Contents	3
About Tru-Fence Supply	4
Vinyl Colors	5
Vinyl Specs	6-7
Vinyl Styles	8-11
Aluminum Colors and Specs	12
Aluminum Styles	13-15
Estate Gates	16-17
Hardware and Accessories	18-23
Ordering Procedures	24
Delivery	25





About



At Tru-Fence Supply, we are a family-owned and operated wholesale fence company based in Jacksonville, FL, proudly serving our community since 2020. We specialize in providing top-quality fencing materials backed by exceptional customer service, ensuring that each of our clients receives the best products for their needs.

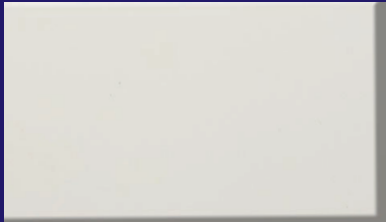
Founded by Donald Connelly, a seasoned professional with over 16 years of experience in the fencing industry, Tru-Fence Supply offers unmatched expertise and guidance. Donald's wealth of knowledge is at the heart of our business, and he is always ready to assist you with advice, product recommendations, and solutions tailored to your specific requirements.

Whether you're a contractor or business owner, Tru-Fence Supply is committed to delivering reliable products and service you can trust. We take pride in our work and strive to be your go-to source for all your fencing needs.

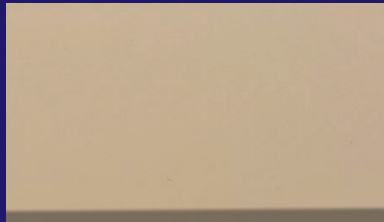
Vinyl Colors

Tru-Fence Supply proudly carries Homeland Vinyl Products.

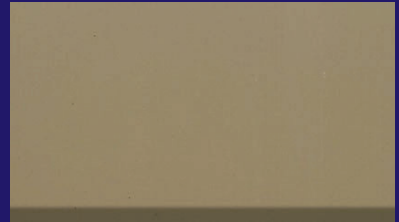
*In Stock Colors



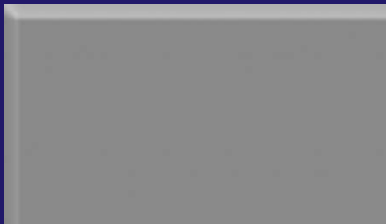
White*



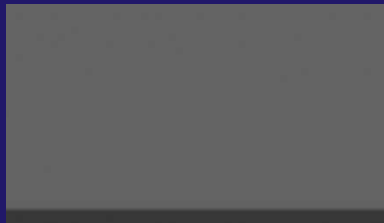
Tan*



Adobe



Light Gray*



Dark Gray*



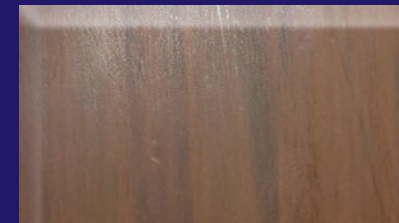
Chai Gray



Aspen Latte



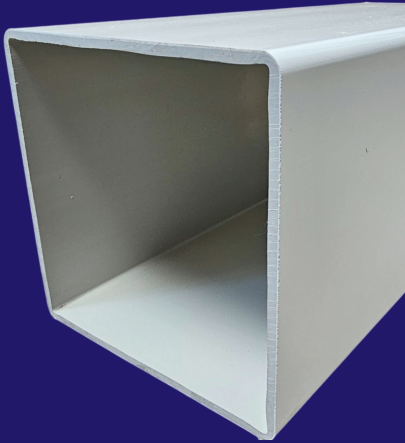
Green Teak*



Mocha Walnut*



Vinyl Specs



Standard Post
5" x 5" x .135" or 5" x 5" x .150"



Pocket Rail
1 3/4" x 5 1/2" .075"



Nexus Rail
1 3/4" x 5 1/2" x .075"



Utility Rail
1 1/2" x 5 1/2" x .080"

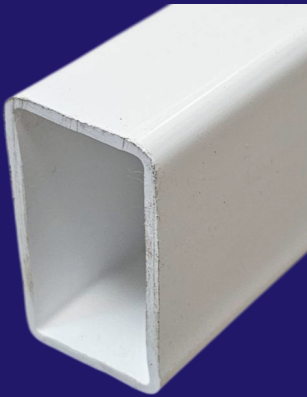


T&G Picket
7/8" x 6" x .045"
White, Tan, Light Gray and Dark Gray
7/8" x 6" x .050"
Green Teak and Mocha Walnut

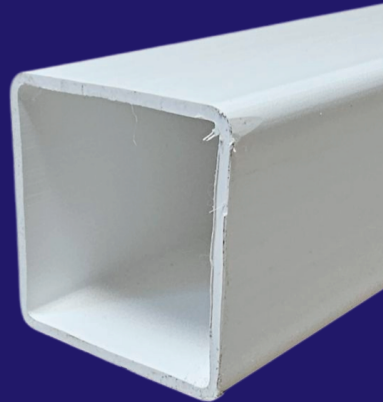


Utility Rail
2" x 3 1/2" x .095"

Vinyl Specs



Neptune Beach
7/8" x 1 1/2" x .070"



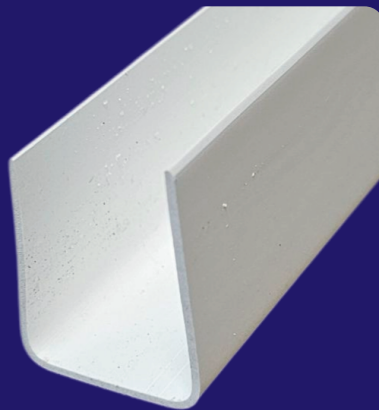
Ponte Vedra
1 1/2" x 1 1/2" x .070"



Atlantic Beach
7/8" x 3" x .070"



Jax Beach
7/8" x 6" x .055"



U Channel
7/8" x 1.375" x .035"



Horizontal U Channel
1.74" x 1.33" x .060"



Styles



Duval

Privacy T&G
Color: Available in Stocking Colors
Height: 3' - 8'
Width: 6' or 8'



Riverside

Lattice Top
Color: White and Tan
Height: 4' - 8'
Width: 6' or 8'



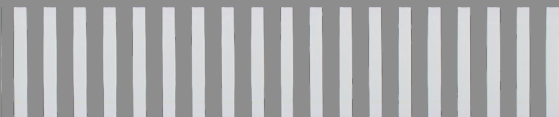
Duval Horizontal

Horizontal
Color: White and Tan
Height: 4' - 6'
Width: 67"

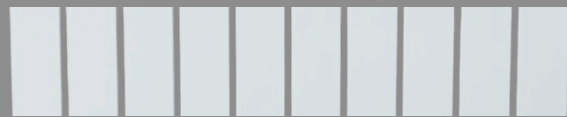


Duval with Accent

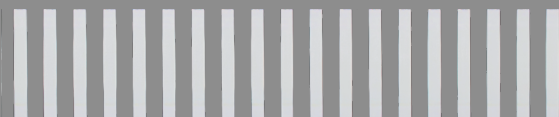
Available in Jax Beach, Atlantic Beach, Neptune Beach and Ponte Vedra
Accent Picket
Top Rail: Open or Closed Top
Color: White and Tan
Height: 4' - 8'
Width: 6' or 8'



Ponte Vedra
1 1/2" x 1 1/2" Picket Accent



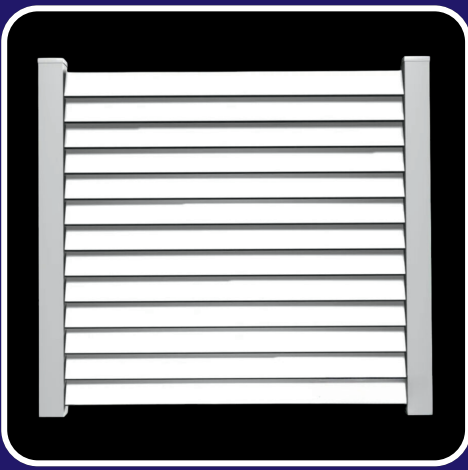
Jax Beach
7/8" x 6" Picket Accent



Neptune Beach
7/8" x 1 1/2" Picket Accent



Atlantic Beach
7/8" x 3" Picket Accent



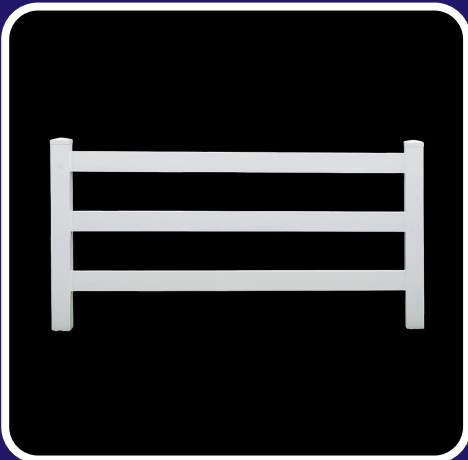
Avondale

Louver
Color: White and Tan
Height: 3' - 8'
Width: 6'



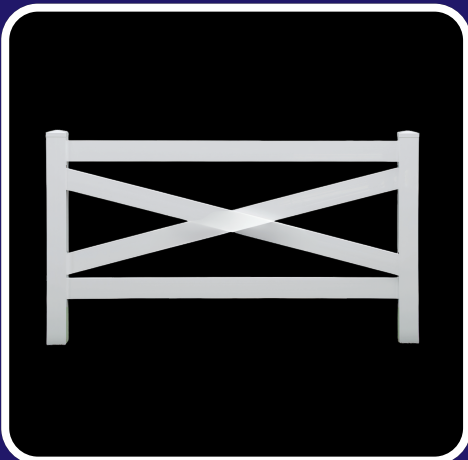
Arlington

Shadow Box
Color: White and Tan
Height: 3' - 6'
Width: 6'



Mandarin

Ranch Rail
Color: White and Tan
Height: 3' - 5'
Width: 8' or 16'



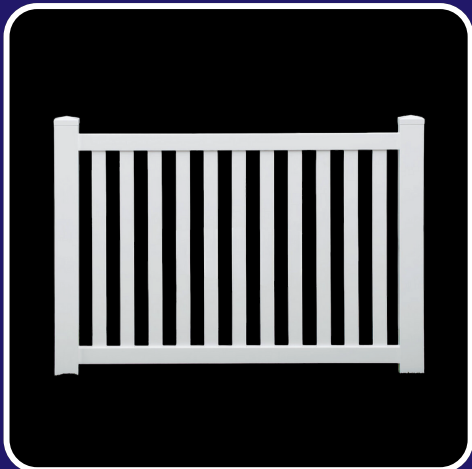
Cross Buck

Ranch Rail
Color: White and Tan
Height: 4' or 5'
Width: 8'



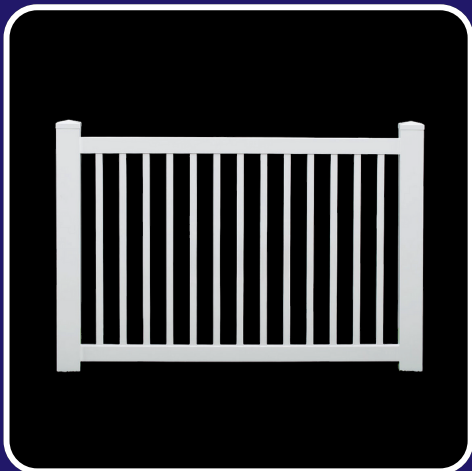
Jax Beach

7/8" x 6" Picket Style
Color: White and Tan
Height: 3' - 6'
Width: 6'



Atlantic Beach

7/8" x 3" Picket Style
Available in an Open Picket Style.
See page 11.
Color: White and Tan
Height: 3' - 5'
Width: 6' or 8'



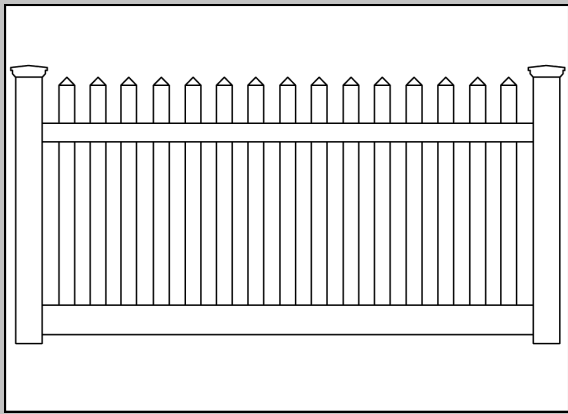
Neptune Beach

7/8" x 1 1/2" Picket Style
Available in Open Picket Style.
See page 11.
Color: White and Tan
Height: 3' - 5'
Width: 6' or 8'



Ponte Vedra

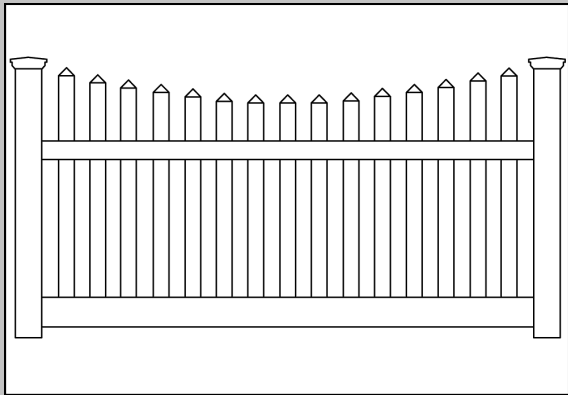
1 1/2" x 1 1/2" Picket Style
Available in Open Picket Style.
See page 11.
Color: White and Tan
Height: 3' - 5'
Width: 6' or 8'



Flat Top

Available in Jax Beach, Atlantic Beach, Neptune Beach and Ponte Vedra Styles

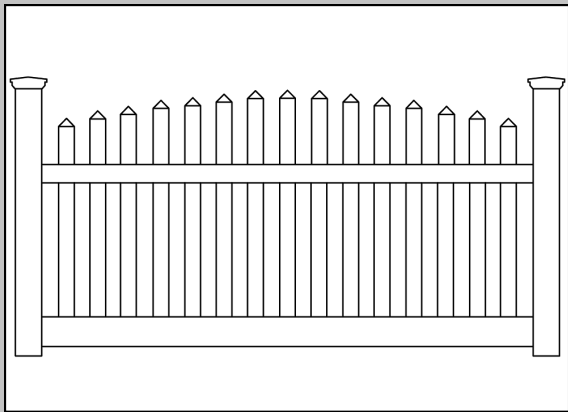
With choice of Spade or Dog Eared Caps



Scalloped Top

Available in Jax Beach, Atlantic Beach, Neptune Beach and Ponte Vedra Styles

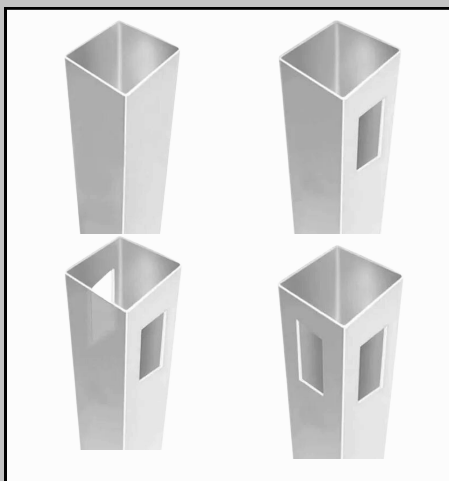
With choice of Spade or Dog Eared Caps



Arch Top

Available in Jax Beach, Atlantic Beach, Neptune Beach and Ponte Vedra Styles

With choice of Spade or Dog Eared Caps



Vinyl Post

Color: Available in Stocking Colors

Route Variations: Blank, Line, Corner, End and T-Post

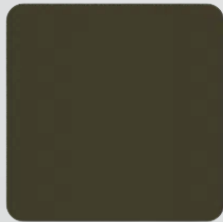
Height: 72", 102" or 144"

Size: 5"W x 5"W

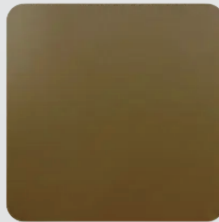
Aluminum Colors & Specs

Available Colors

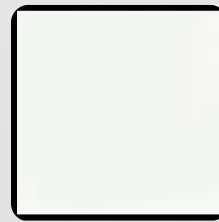
Black is a stocking color. All other colors are special order.



Bronze



Light Bronze



White



Black



Green



Textured Black

Rail Sizes



Residential
1" x 1"



Commercial
1 1/4" x 1 1/4"



Industrial
1 1/2" x 1 5/8"

Picket Sizes



Residential
5/8" x 5/8"

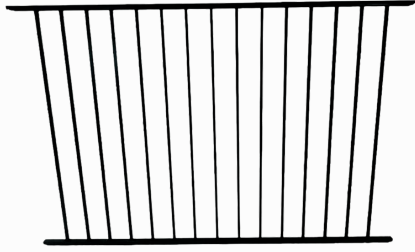


Commercial
3/4" x 3/4"



Industrial
1" x 1"

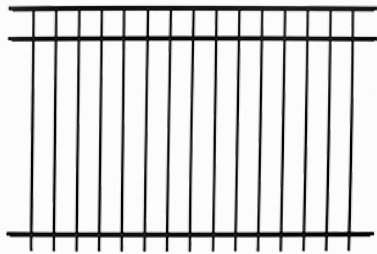
In Stock Aluminum



Emily

2 Rail 48" – Pool Code Panel
Size: 48"H x 6'W Smooth Bottom
Color: Black

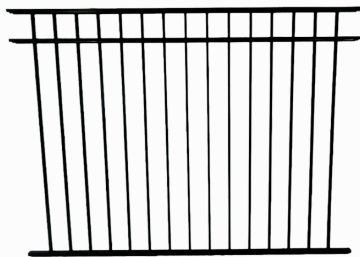
Gate Size: 4', 5' and 6'



Emily

3 Rail 48" or 60" Panel
Size: 48"H x 6'W Rake Bottom
or 60"H x 6'W Rake Bottom
Color: Black

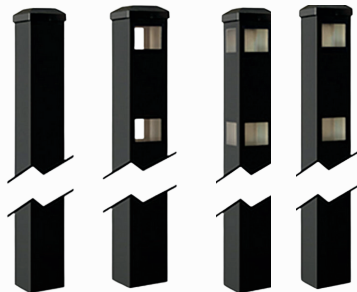
Gate Size: 4', 5' and 6'



Emily

3 Rail 54" – Pool Code Panel
Size: 54"H x 6'W Smooth Bottom
Color: Black

Gate Size: 4', 5' and 6'

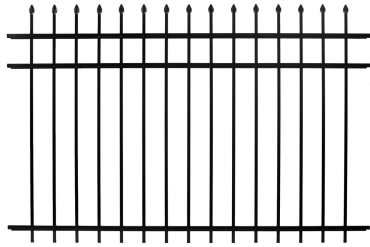


Emily Blank, Line, Corner, End and Gate Post

Available in All Styles and Sizes
Color: Black

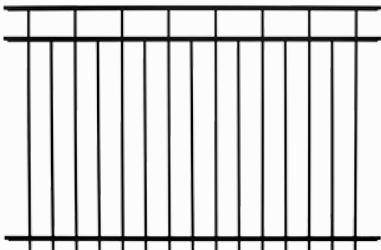
Heavy Wall Blank Post available
in 6' and 7'

Special Order Aluminum



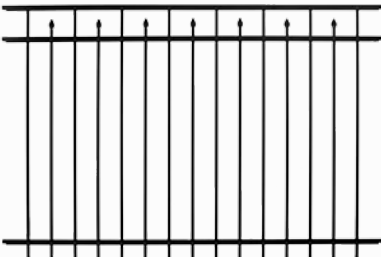
Abigail

3 Rail or 4 Rail Panel
Heights: 36" - 96"
6'W Panel with Rake or
Smooth Bottom
Color: All Available Colors
Available in Residential,
Commercial or Industrial
Grade



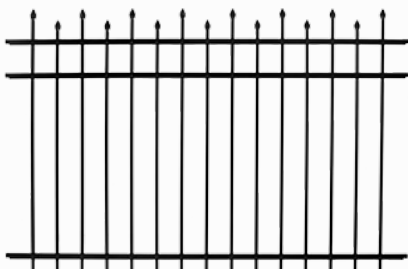
Belle Rae

3 Rail or 4 Rail Panel
Heights: 36" - 96"
6'W Panel with Rake or
Smooth Bottom
Color: All Available Colors
Available in Residential,
Commercial or Industrial
Grade



Elle Marie

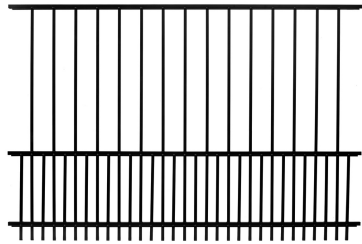
3 Rail or 4 Rail Panel
Heights: 36" - 96"
6'W Panel with Rake or
Smooth Bottom
Color: All Available Colors
Available in Residential,
Commercial or Industrial
Grade



Madison

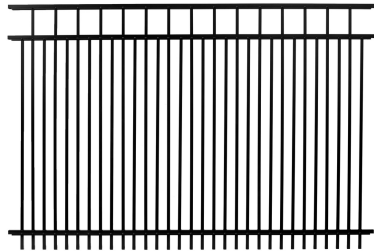
3 Rail or 4 Rail Panel
Heights: 36" - 96"
6'W Panel with Rake or
Smooth Bottom
Color: All Available Colors
Available in Residential,
Commercial or Industrial
Grade

Special Order Options



Puppy Picket

3 Rail or 4 Rail Panel
Heights: 48" - 96"
6'W Panel with Rake or
Smooth Bottom
Color: Available in All Colors
Available in all Styles and
Grades



Double Picket

2 Rail, 3 Rail or 4 Rail Panel
Heights: 48" - 96"
6'W Panel with Rake or
Smooth Bottom
Color: Available in All Colors
Available in all Styles and
Grades



Quad Finial



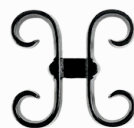
Fluer De Lis
Finial



Triad Finial



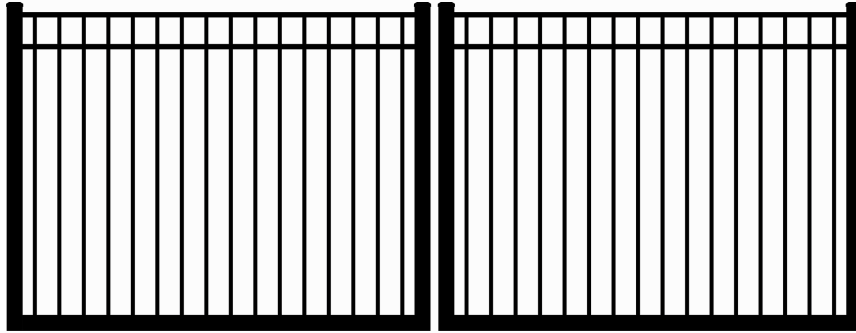
Ring



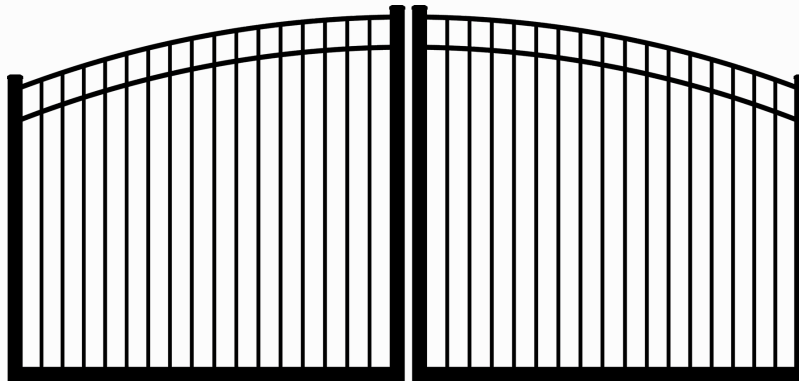
Butterfly
Scroll

Estate Gates

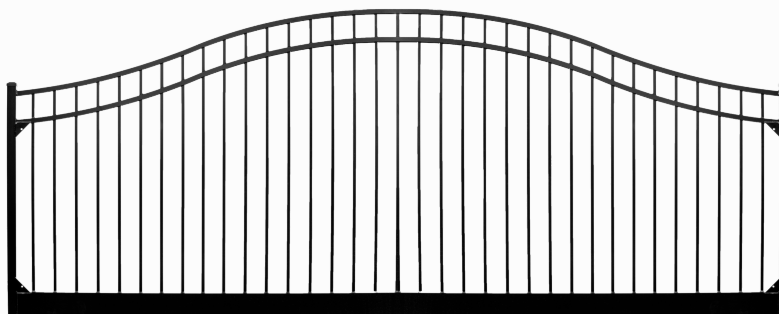
Flat Top



Sunrise Arch



Belle Arch



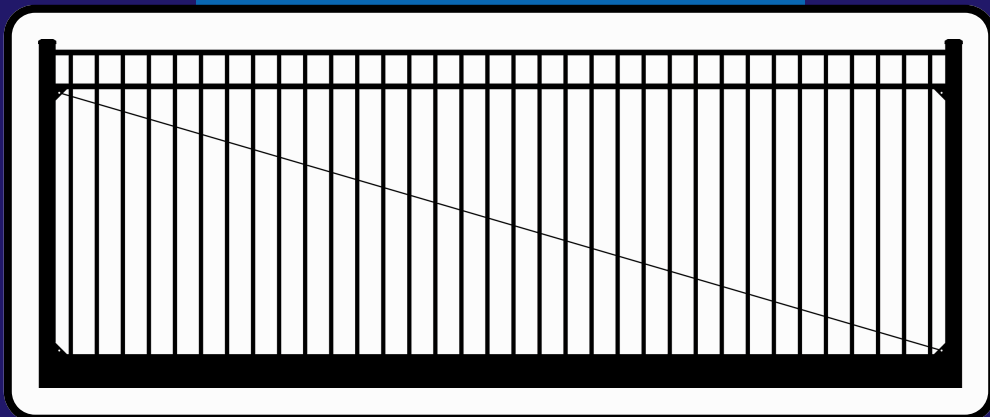
Estate Gates

Options:

- Available in All Styles, Grades and Colors
- Swing Gate: Single or Double Leaf
- Cantilever Gate: Top Track or Bottom Track

Features:

- Operator Ready Bottom
- Welded J-Bolt Hinges or Gorilla Hinges
- Flat Top or Arch Top Sunrise / Belle
- Finials, Rings or Scrolls

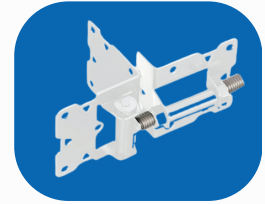


Vinyl



Adjustable Self Closing Vinyl Gate Hinge

Description: Stainless Steel Self-Closing Hinge
Color: Black or White



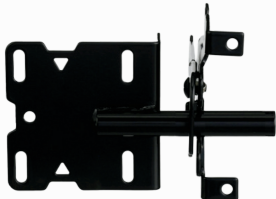
Adjustable Self Closing Vinyl Gate Hinge- Wrap Style

Description: Three-Sided Stainless Steel Self Closing Hinge
Color: Black



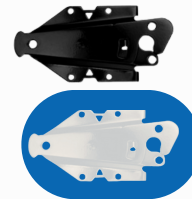
Poly Hinge

Description: Self Closing, Adjustable vertically and horizontally
Color: Black



Standard Vinyl Gate Post Latch

Description: Vertical Adjustable Latch
Color: Black or White



Double Drive Vinyl Gate Latch

Description: 2" Stainless Steel Self-Latching with Stop Washer Latch
Color: Black



Heavy Duty Poly Latch

Description: Double-Sided Keyed Alike Lockable Latch
Color: Black

Hardware

Vinyl



Poly Latch

Description: Single Sided Keyed Alike Latch
Color: Black



Gate Handle

Description: "Best Grip" Nylon Gate Handle
Color: Black



Gate Stop with Handle

Description: "Best Grip" Nylon Gate Handle with Stopper
Color: Black



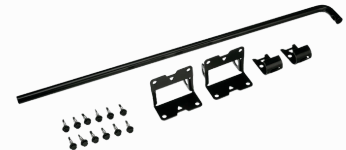
24" Drop Rod

Description: 24" Steel
Color: Black



24" or 42" Stainless Steel Lockable Drop Rod

Description: Lockable with pad lock or combination lock
Color: Black



Vinyl



Vinyl Rail Mount

Description: 1.75" x 5.5"
Color: White or Tan



Adjustable Vinyl Gate Brace

Description: Aluminum Gate Brace
Color: Black



Vinyl Gate Brace

Description: Vinyl Gate Brace 96"
length for use up to 6' wide gate
Color: White or Tan



External Pyramid Post Cap

Description: 5"W x 5"W or 4"W x 4"W
Color: Available in Stocking Colors



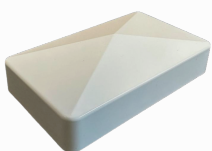
Gothic Post Cap

Description: 5"W x 5"W
Color: White and Tan



New England Post Cap

Description: 5"W x 5"W
Color: White or Tan



External Pyramid Gate Cap

Description: 2"W x 3 1/2"W
Color: Available in Stocking Colors



54" Post Mount Tower

Description: H Frame Aluminum 5" x 54"
Post Mount with welded floor flange



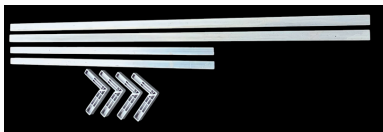
20" Post Mount Tower

Description: L Frame Steel 5" x 20" Post
Mount



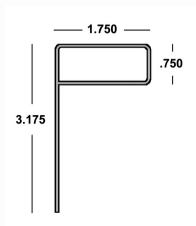
108" Post Insert

Description: 5" H Frame Aluminum Post Insert
for 8' Tall Fence or Gate Post



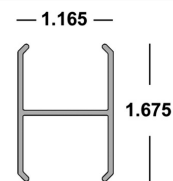
Internal Gate Frame Kit

Description: Four Aluminum cast corners with
Two 1 1/4" and Two 1 1/2" pieces of square
tubing to make internal frame vinyl gates.



P-Channel

Gate Upright
6' or 8'



Rail Stiffener

Length 8'



1.5" Self Tapping Screws

White and Black

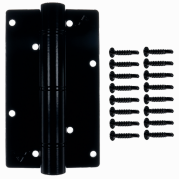


Rivets

White and Tan



Aluminum



Standard Self Closing Aluminum Hinge

Description: Self Closing Aluminum Hinge
Color: Black



Adjustable Self Closing Aluminum Gate Hinge

Description: Adjustable Self Closing Aluminum Gate Hinge
Color: Black



Poly Hinge

Description: Adjustable Self Closing Poly Gate Hinge
Color: Black



Standard Gravity Latch

Description: Steel Gravity Latch
Color: Black



Heavy Duty Gravity Latch

Description: 2" Stainless Steel Self-Latching with Stop Washer Latch
Color: Black



Poly Latch

Description: Single or Double-Sided Keyed Alike Lockable Latch
Color: Black

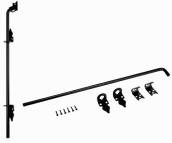


Pool Latch

Description: 22" Magnetic Top Pull Latch SafeTech
Color: Black

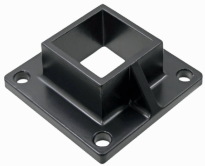
Hardware

Aluminum



24" Drop Rod

- 24" Steel Pad-Lockable
 - Black
-



Standard Deck Mount for Aluminum

Description: For a 2"x 2" Aluminum Post
Color: Black



Heavy Duty Deck Mount for Aluminum

Description: For a 2"x 2" Aluminum Post
Color: Black



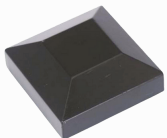
Wall Mount

Description: Wall Mount for an Aluminum Panel
Color: Black



Swivel Wall Mount

Description: Wall Mount for an Aluminum Panel
Color: Black



Aluminum Pyramid Cap

Description: H 2" x W 2"
Color: Black



1" Self Tapping Screws

Color: Black

ORDERING PROCEDURES

1. We accept all orders via email at trufencesupply@gmail.com or via text to 904-220-2030. Please include a full breakdown (panels, line post, corner post, end post, gate post, blank post, gate/gate kit, hardware, concrete or a full drawing with measurements).
2. Once order is received you will then receive a QuickBooks Estimate. We ask that you review this order for accuracy. If accurate, please response to trufencesupply@gmail.com approving the Estimate with a pick-up date and/or delivery date. We kindly, ask that you allow 48 hours for orders to be built. If it is a rush job, just let us know and we will see if we can fit you into the schedule. Communication is key.
3. You will then receive an email back from us confirming your pick up/delivery date.
4. Tru-Fence Supply will send an invoice via QuickBooks once the order is ready for pick-up. Pick-up hours are Monday-Friday from 7:30am-3:30pm. If you have a scheduled delivery, you will receive the invoice via QuickBooks prior to the delivery. Please note ALL orders must be paid in full before being picked up and/or delivered.
5. For pick-ups, please pull parallel to the building and come inside to receive your hardware.
6. We will get you loaded as soon as possible. Thank you for your continued support and business. We look forward to seeing you again.

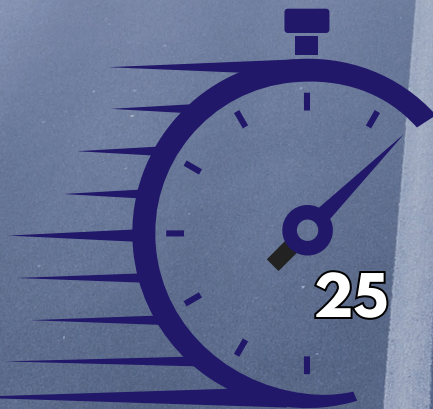
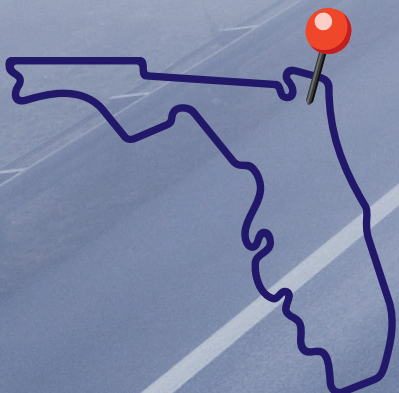




Job Site Delivery

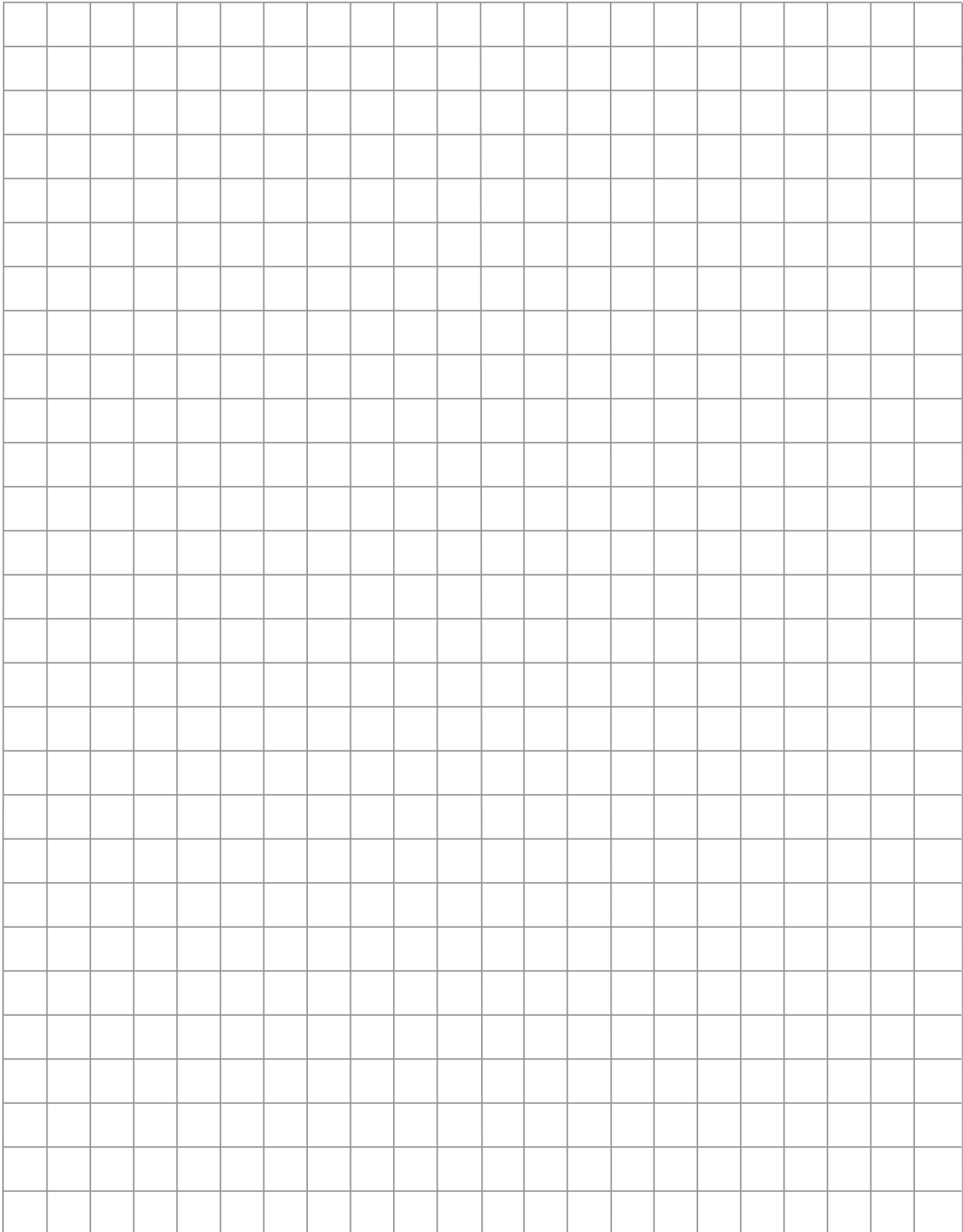
Price varies based on location

- Professionally delivered
- Day in advance delivery
- Text notification when materials are delivered
- No job too big, no job too small



NOTES

DATE : / /





*Thank
You*

Thank you for choosing Tru-Fence Supply as your fence wholesaler.



Here at Tru-Fence Supply, we pride ourselves on offering top-quality fencing materials and exceptional customer service.

We aim to make your experience with us smooth, enjoyable, and hassle-free.

If there is ever anything we can do to further assist or make your experience seamless, please do not hesitate to ask.

CONTACT US

📞 904-220-2030

✉️ Trufencesupply@gmail.com

❤️ Follow us on 

🌐 www.Trufencesupply.com 

📍 1642 Cortez Road
Jacksonville, FL 32246



MONDAY THROUGH FRIDAY
from 7:30 am to 4:00 pm